

Final Skate Specifications

0011

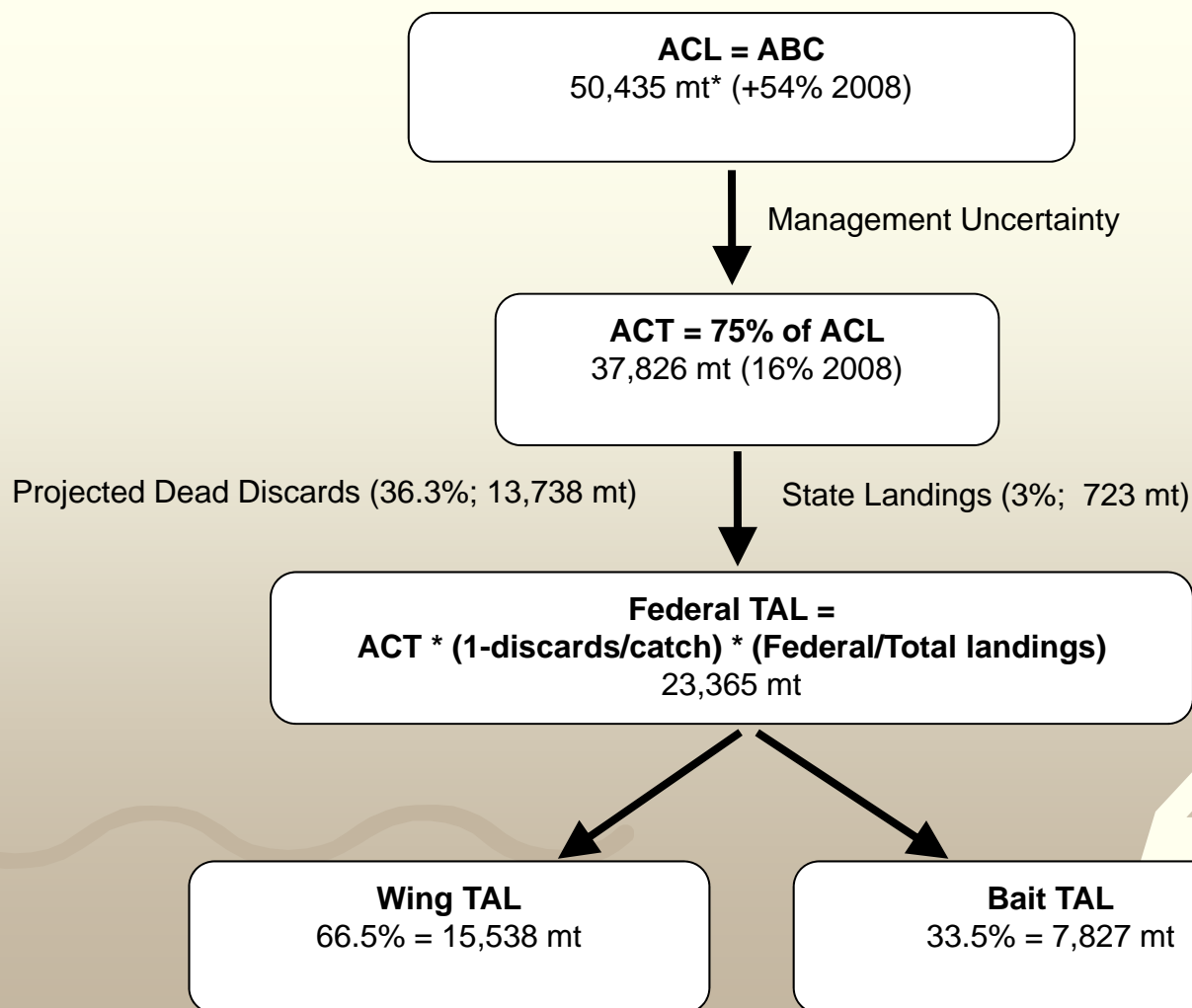
Adjustments to Skate ABC
specifications and management
measures



Skate specifications

ABC and discard estimates approved by SSC

0011



New data

0011

- 2009-2011 survey biomass
 - Large increases in little and winter skate, compare to Amendment 3 specifications
 - Better little and winter skate discard mortality estimates
 - Increases TAL as a proportion of ACT
 - Decreased catch/biomass exploitation ratio and therefore ABC

0011

Mean survey biomass Figure 1

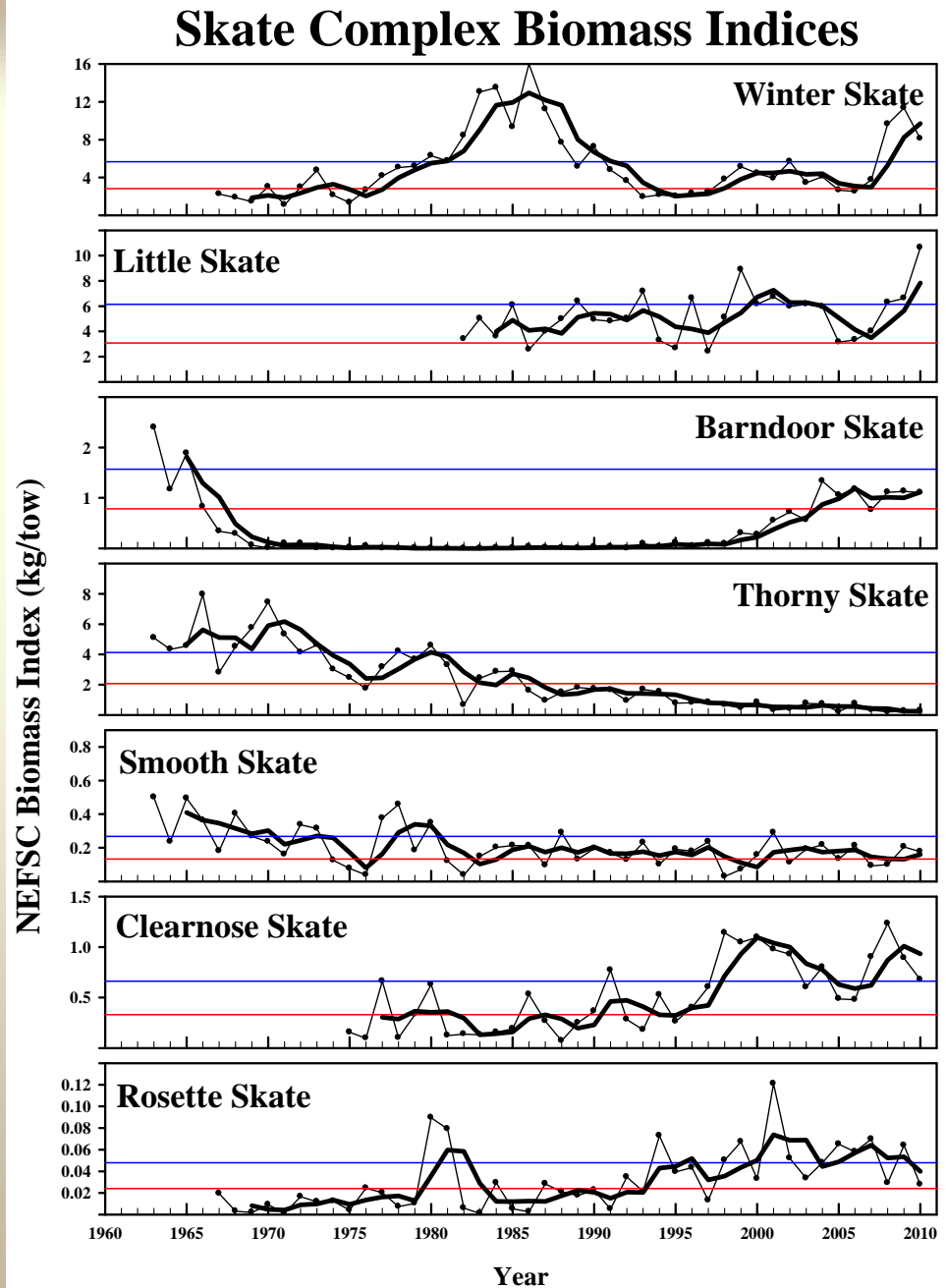
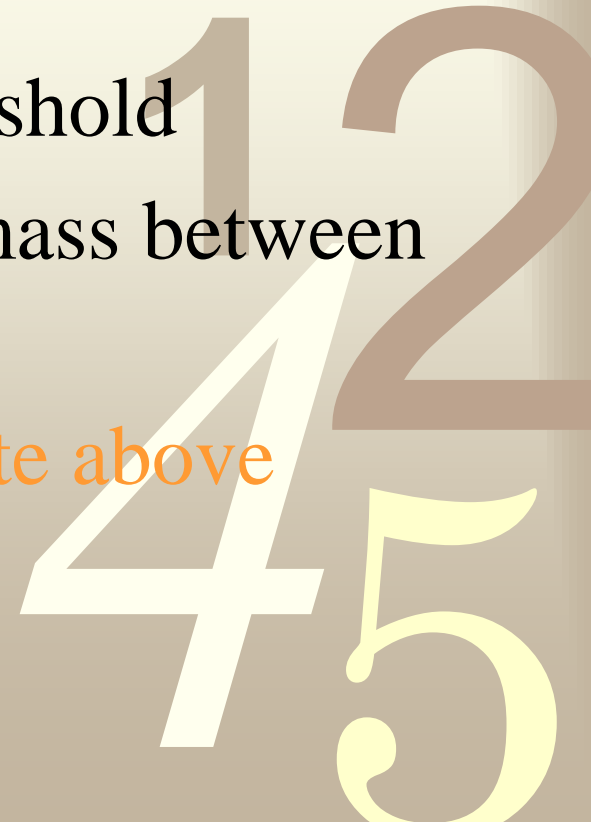


Figure 1. NEFSC survey biomass indices (kg/tow). Thin lines with symbols are annual indices, thick lines are 3-year moving averages, and the thin horizontal lines are the biomass thresholds developed through 2007/08 using consistent strata sets.

Updated Status

0011

- No overfishing on any stock
- Thorny skate overfished
- Smooth skate near biomass threshold
- Barndoor skate rebuilding, biomass between target and threshold
- Clearnose, little, and winter skate above target



Specification timeline

0011

- **Apr 2011**: SSC peer review of survey calibration methods for skates
- **Jun 2011**: SSC review and approval of ABC and new discard mortality
- **Jun 2011**: Council identifies alternatives
- **Sep 2011**: Council approves final specifications package
- **Oct 2011**: NMFS begins review; publishes proposed rule
- **May 2012**: Final rule becomes effective



Specifications package alternatives

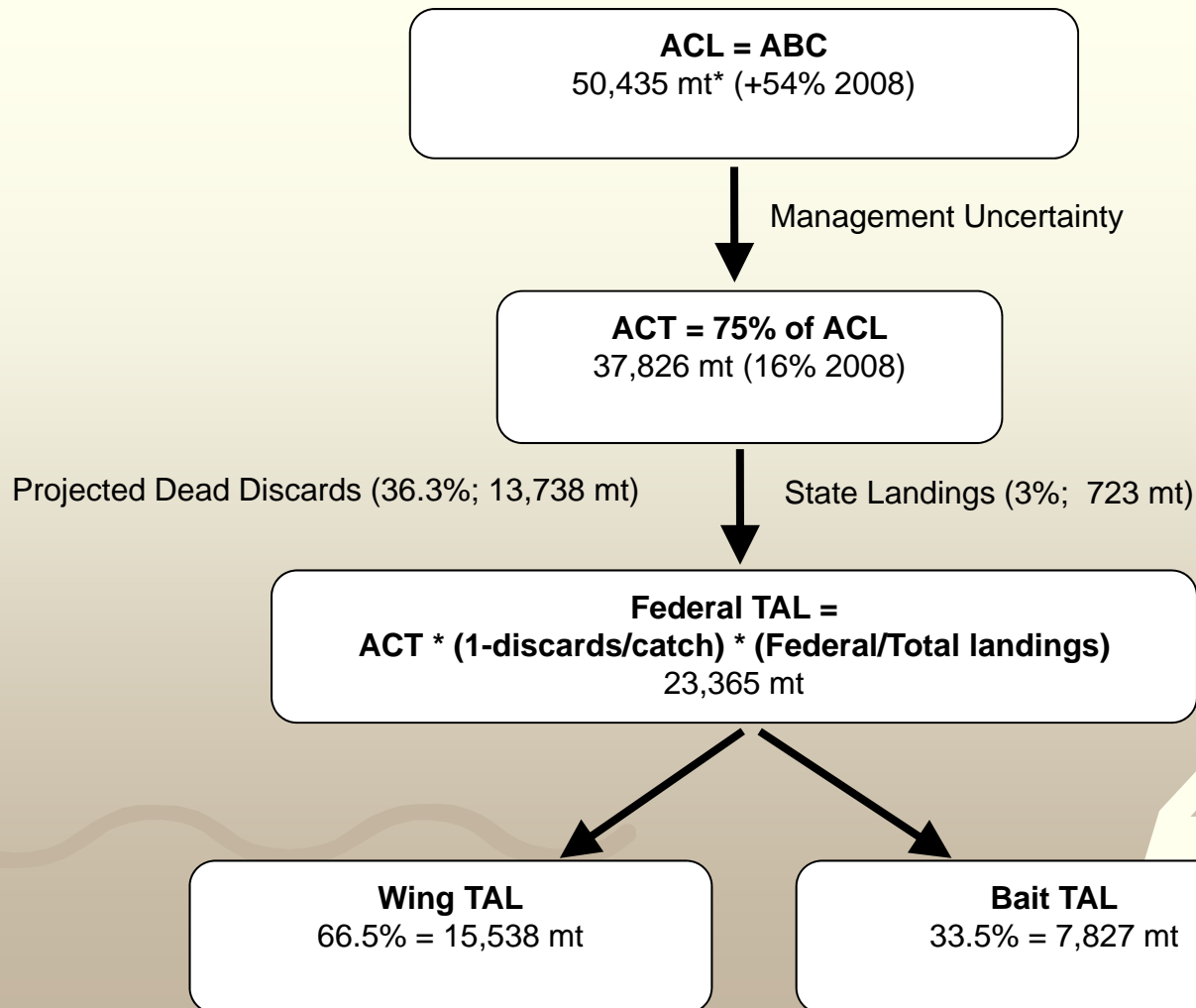
0011

- **ACL specifications**
(Section 4.1, page 4-27)
- **Status determination specifications**
(Section 4.2, page 4-30)
- **Wing fishery possession limit adjustments**
(Section 4.3, page 4-33)
- **Bait fishery possession limit adjustments**
(Section 4.4, page 4-34)



Skate ACL specifications

0011



Skate ACL specification analysis

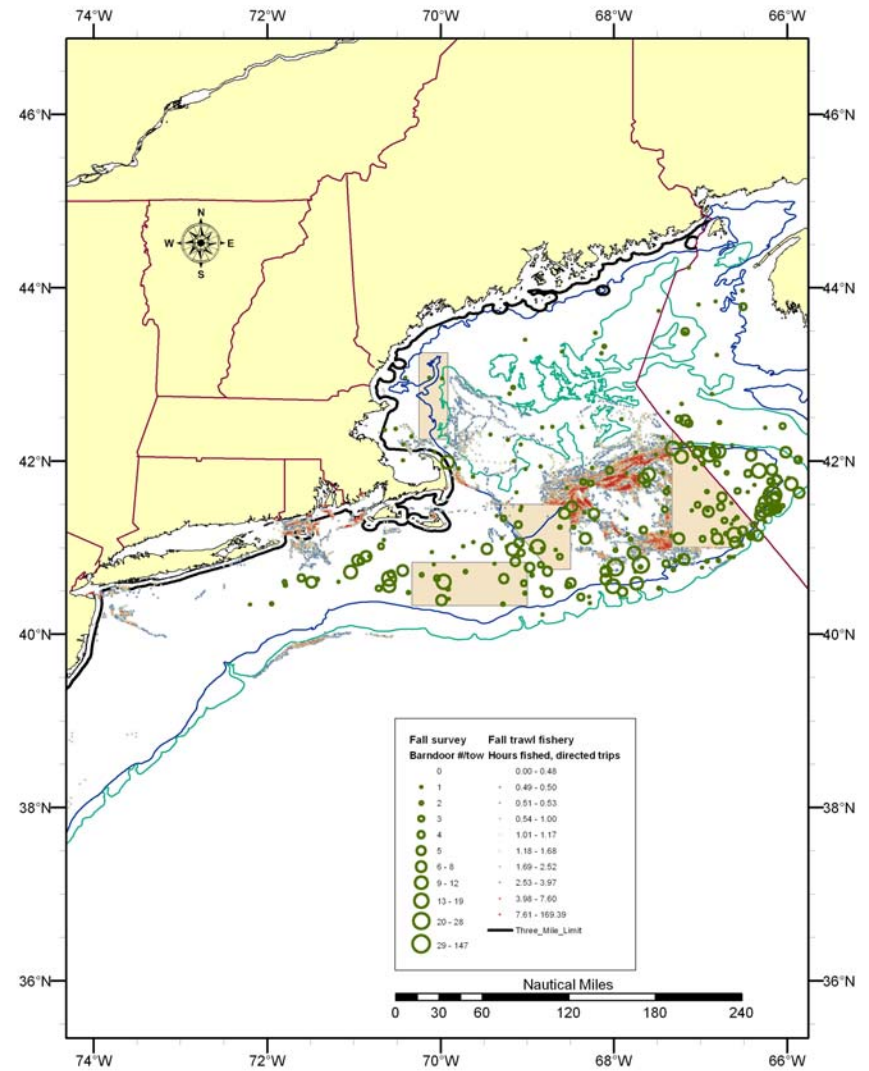
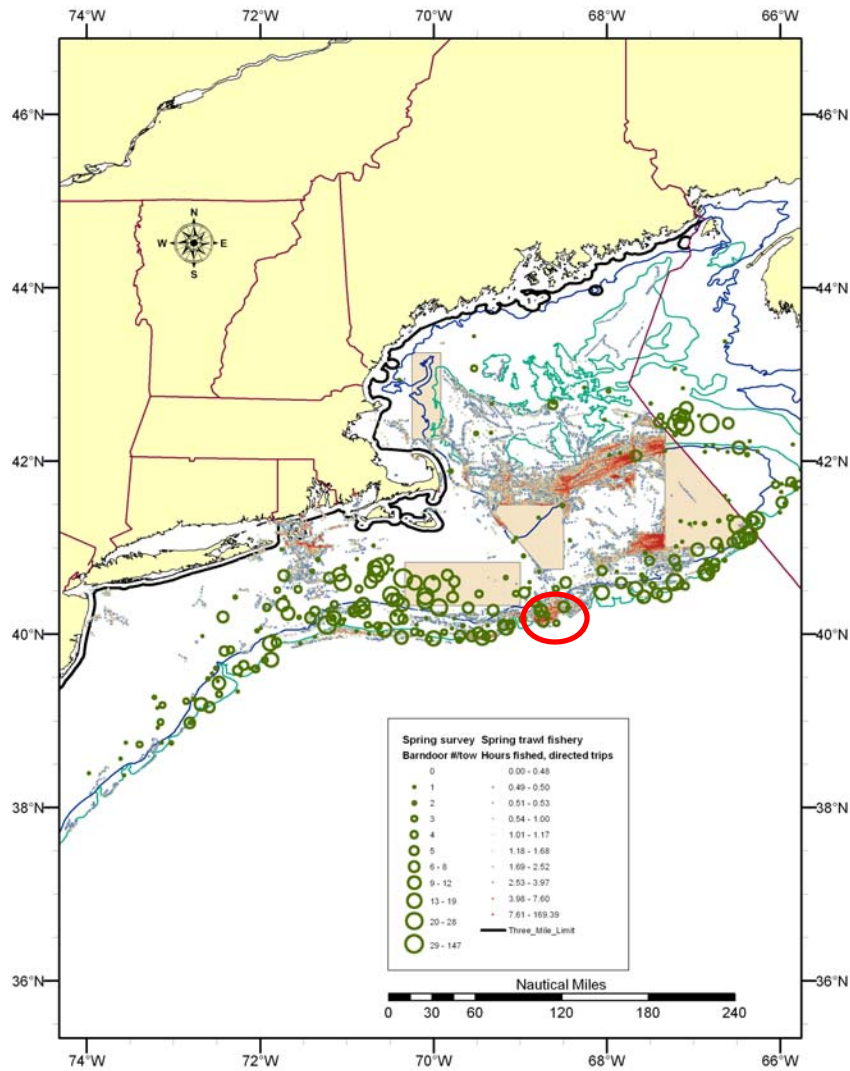
Section 6.1.1, page 6-135

0011

- Median catch/biomass ratio is conservative
 - Biomass increases more frequently and at a higher rate than when catches exceed the ABC
 - Marginal impacts on overfished thorny, nearly overfished smooth, and rebuilding barndoor
 - Small amount of overlap in skate fishing effort with barndoor, smooth, and thorny skates.
 - Higher revenue; fewer discards
 - Possible increase in trips and trip duration

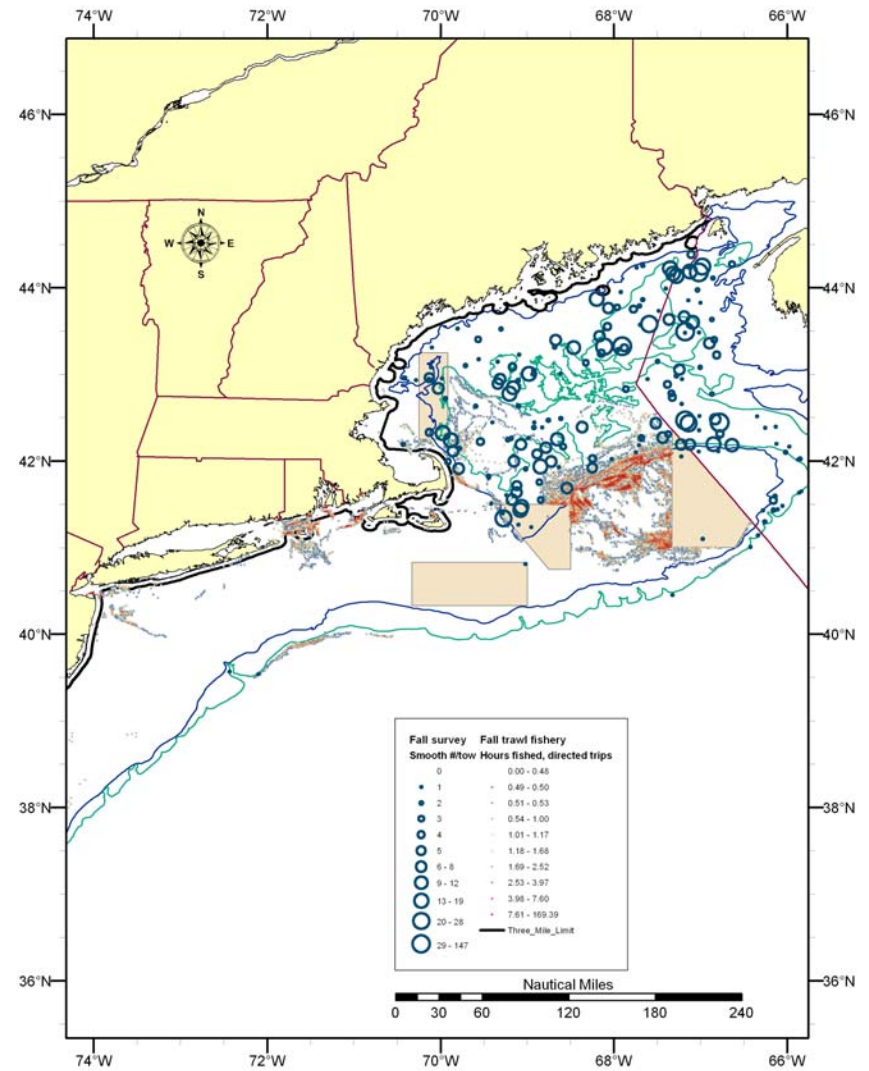
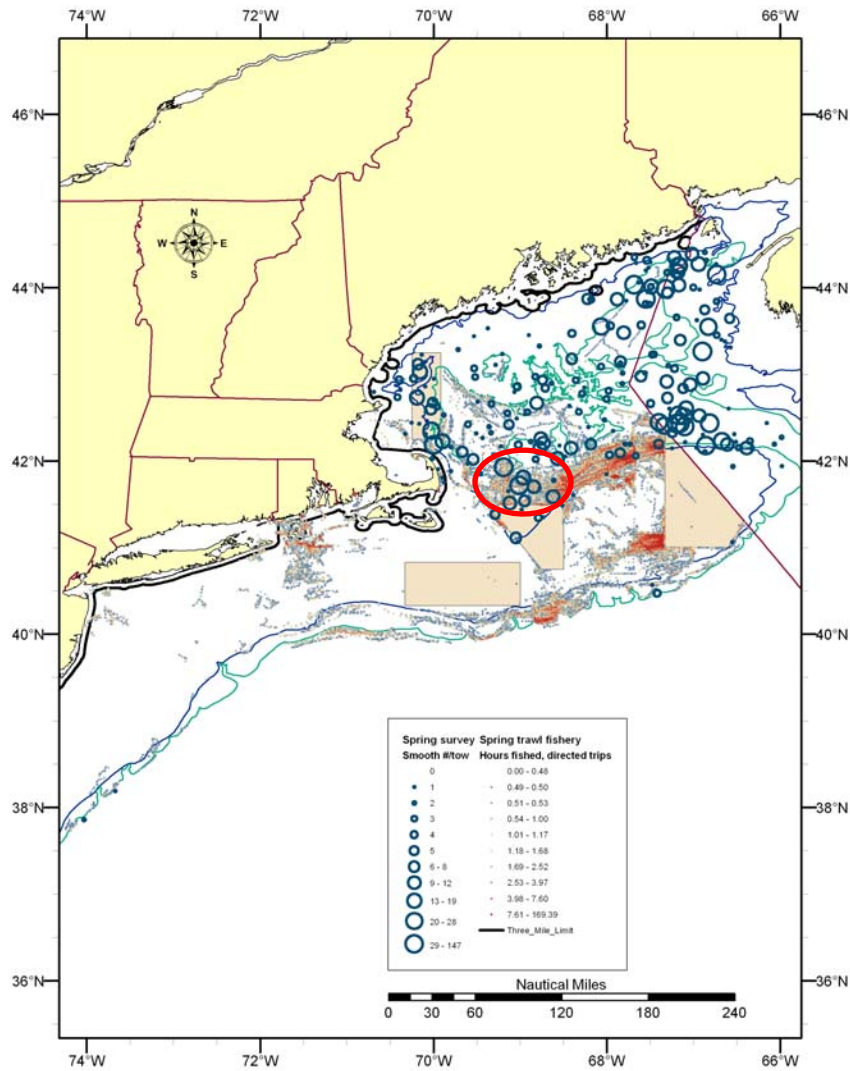
Barndoor skate & trawls

Map 16, page 6-141



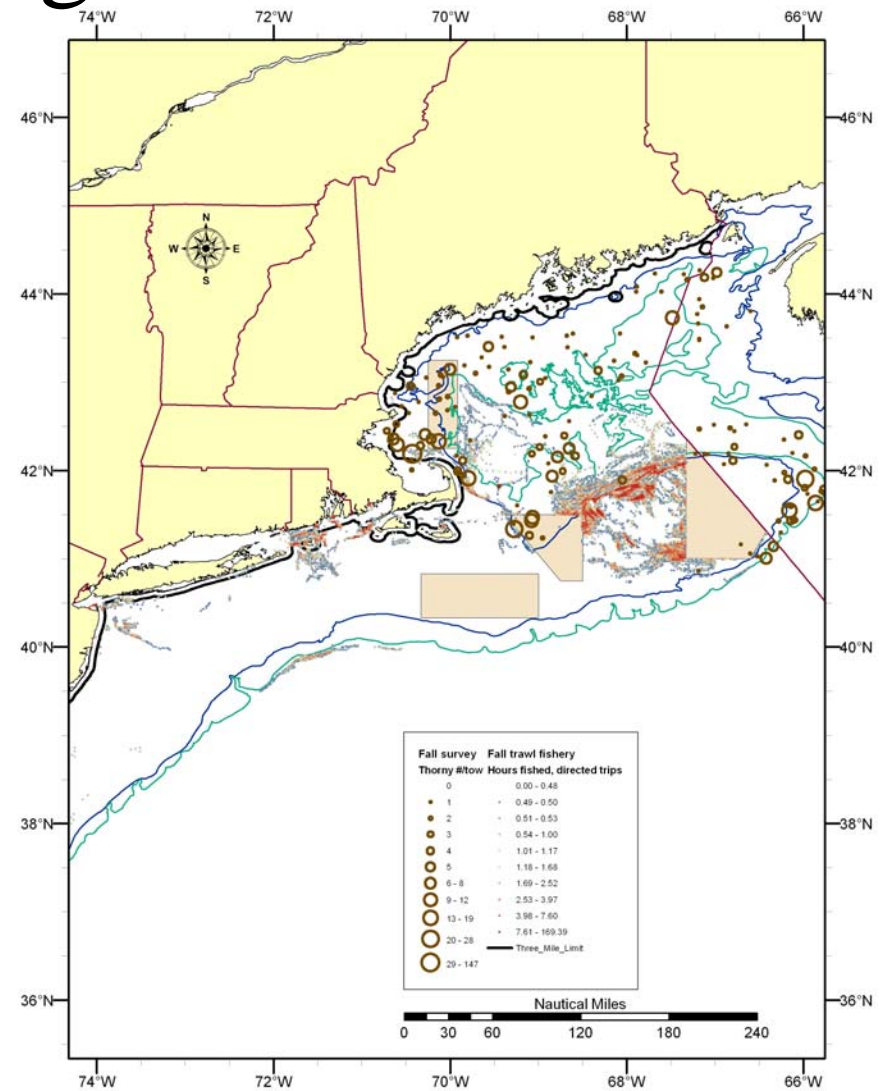
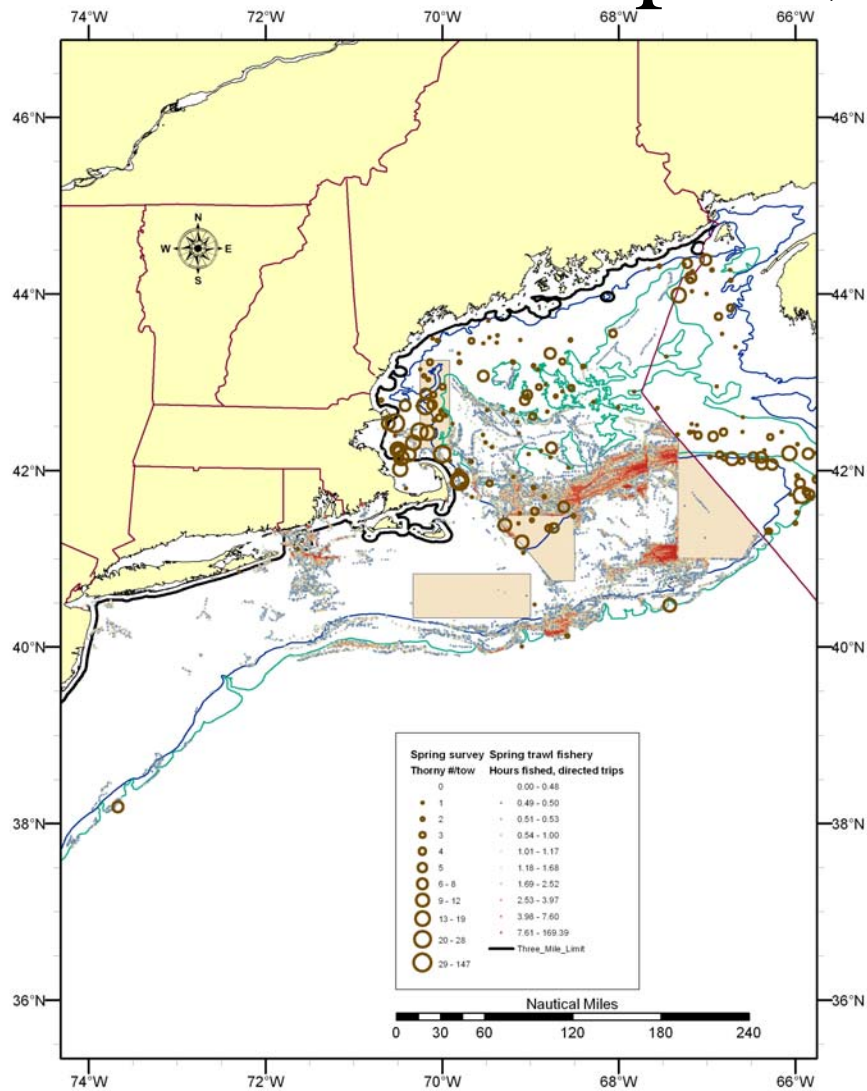
Smooth skate & trawls

Map 17, page 6-142



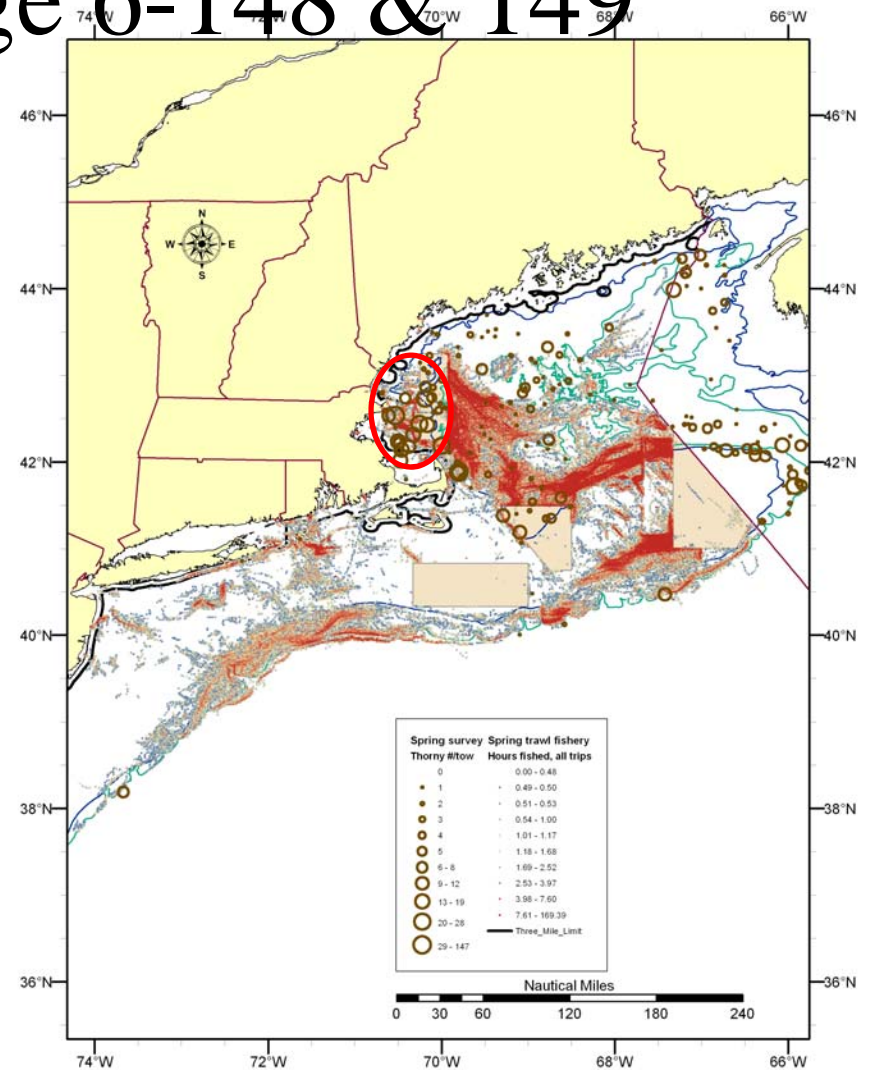
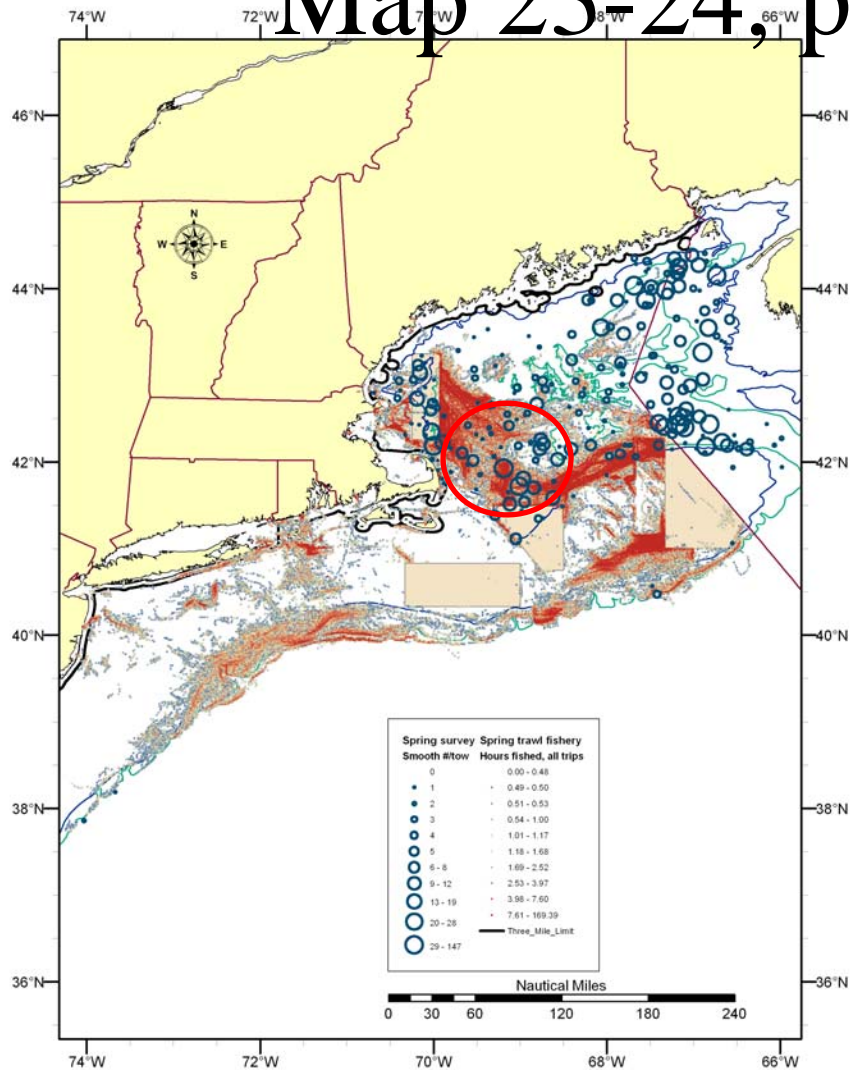
Thorny skate & trawls

Map 18, page 6-143



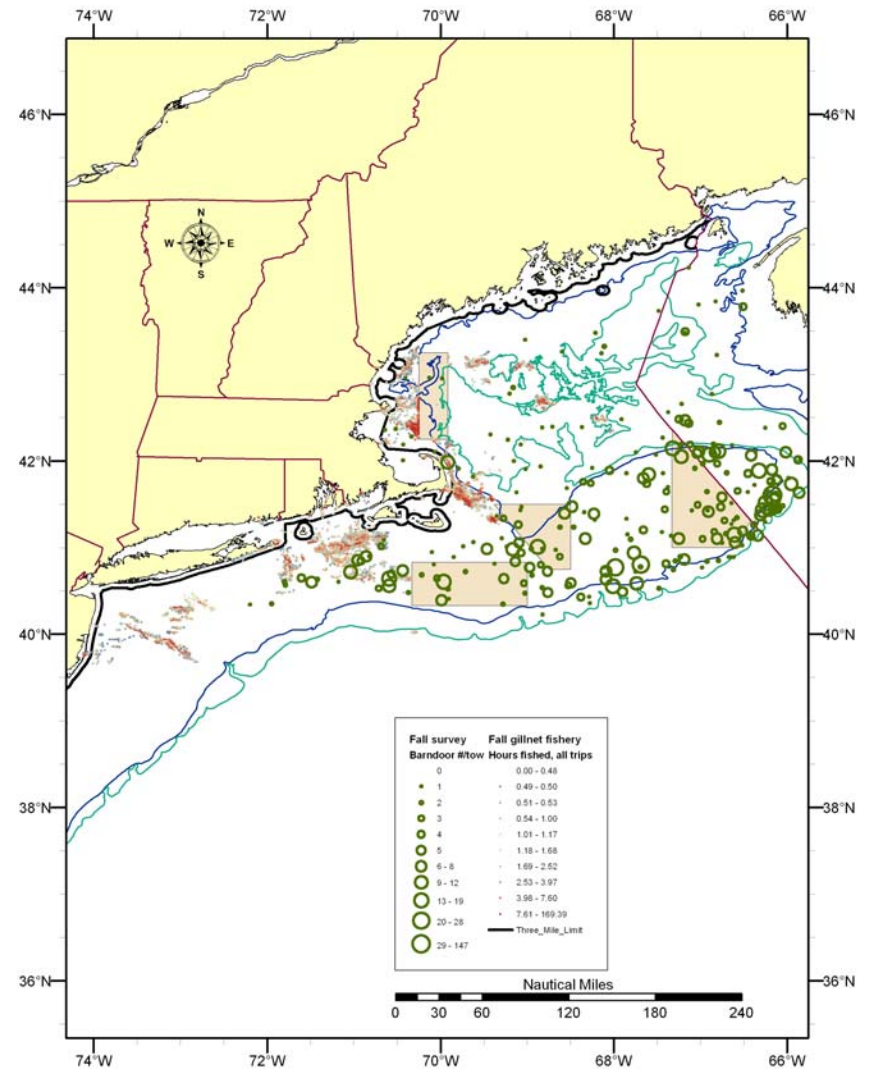
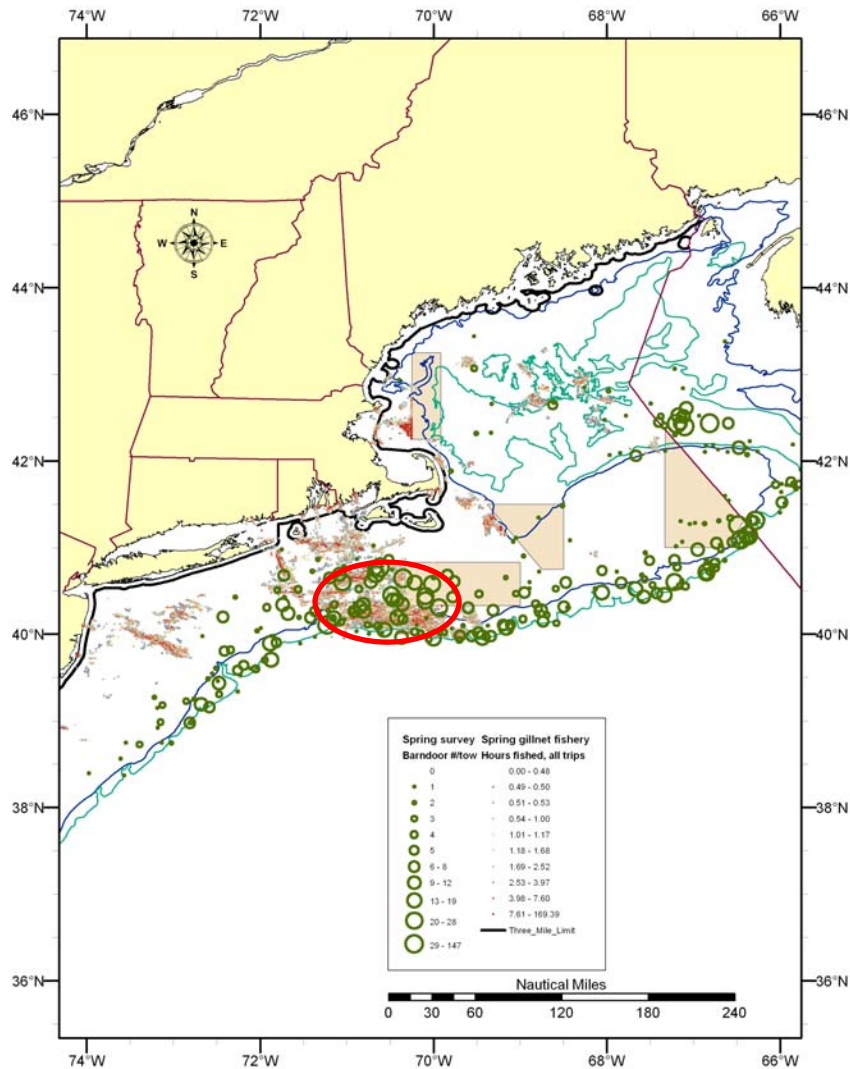
Smooth & thorny skate & spring trawls

Map 23-24, page 6-148 & 149



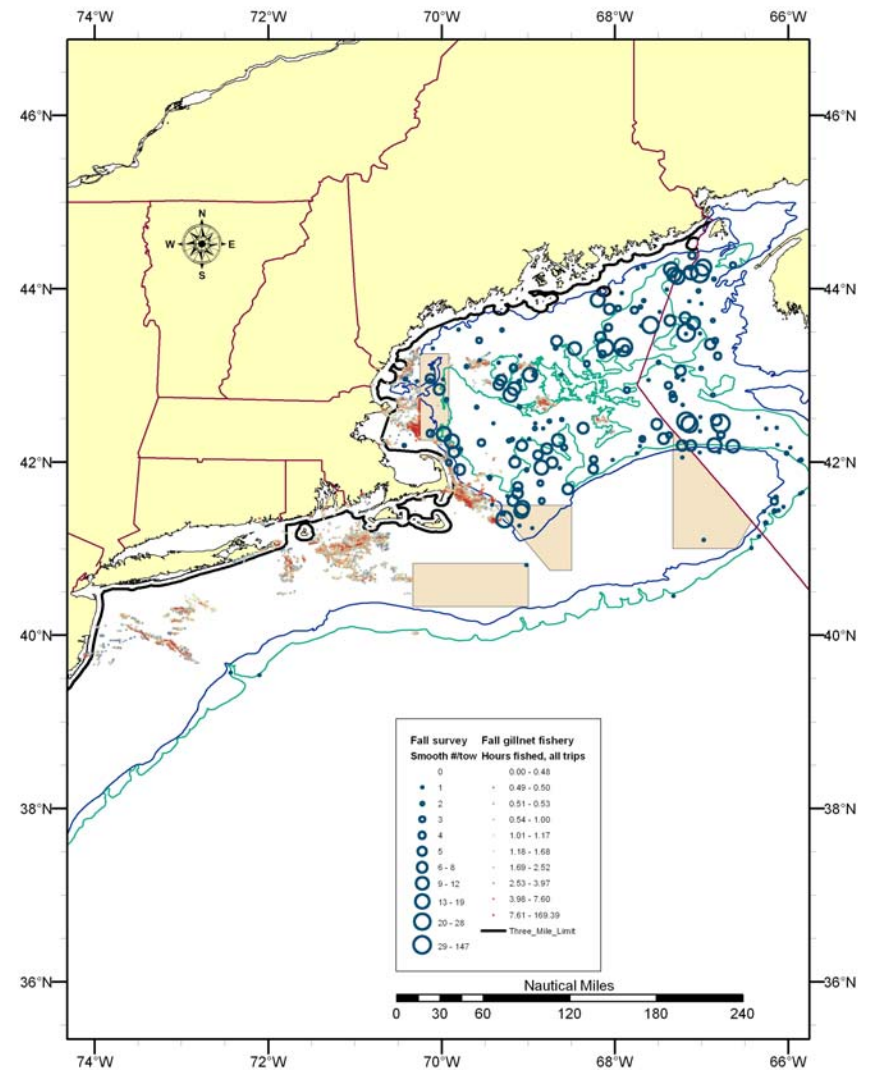
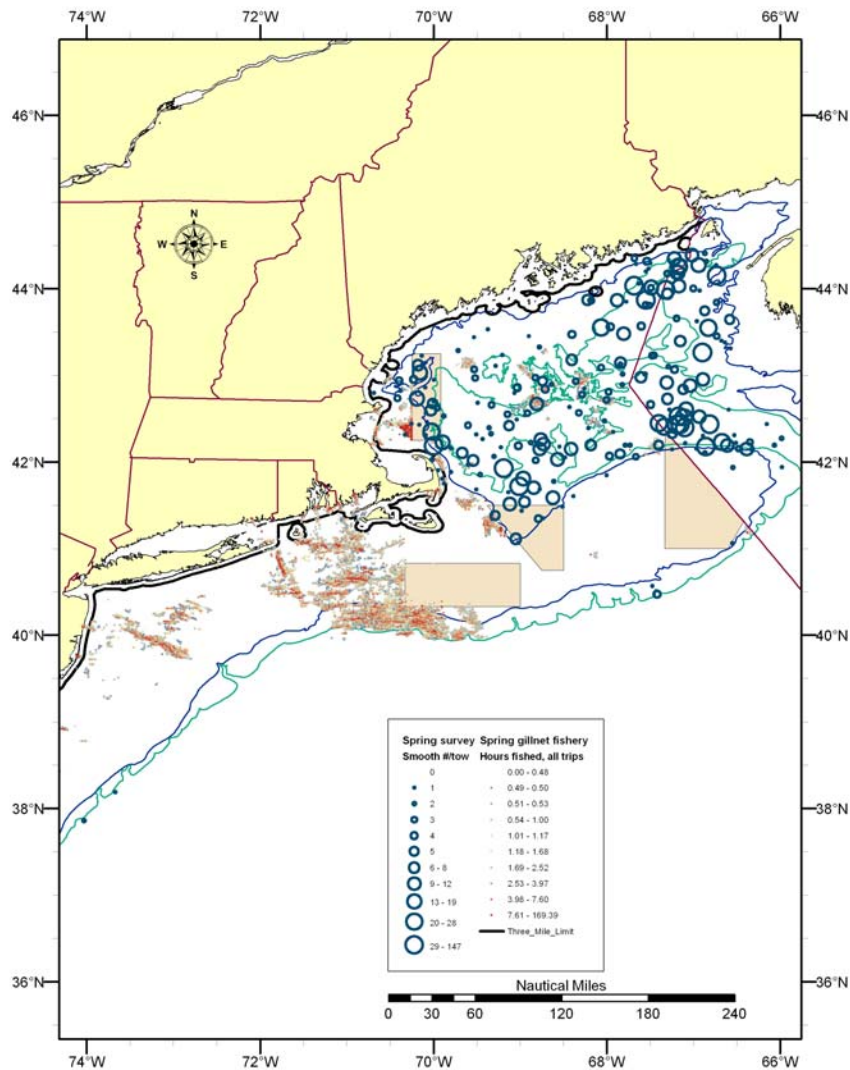
Barndoor skate & gillnets

Map 25, page 6-152



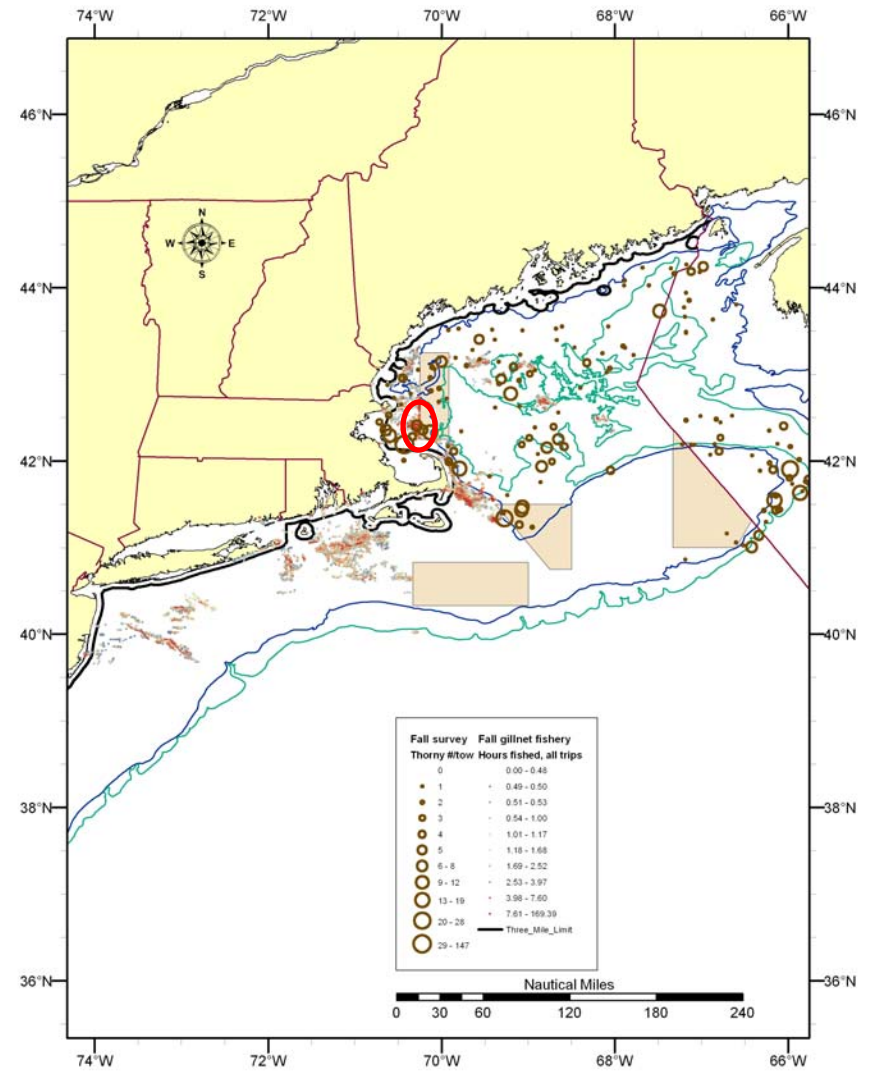
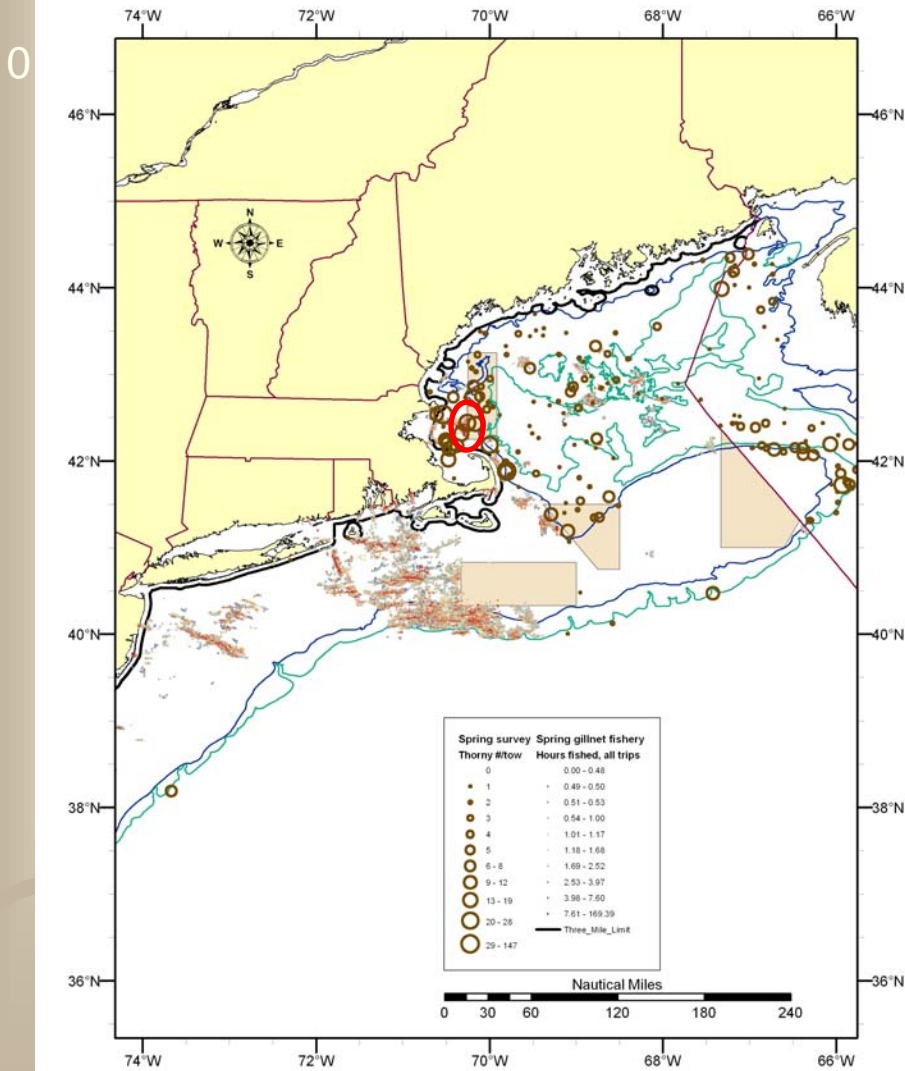
Smooth skate & gillnets

Map 32, page 6-159



Thorny skate & gillnets

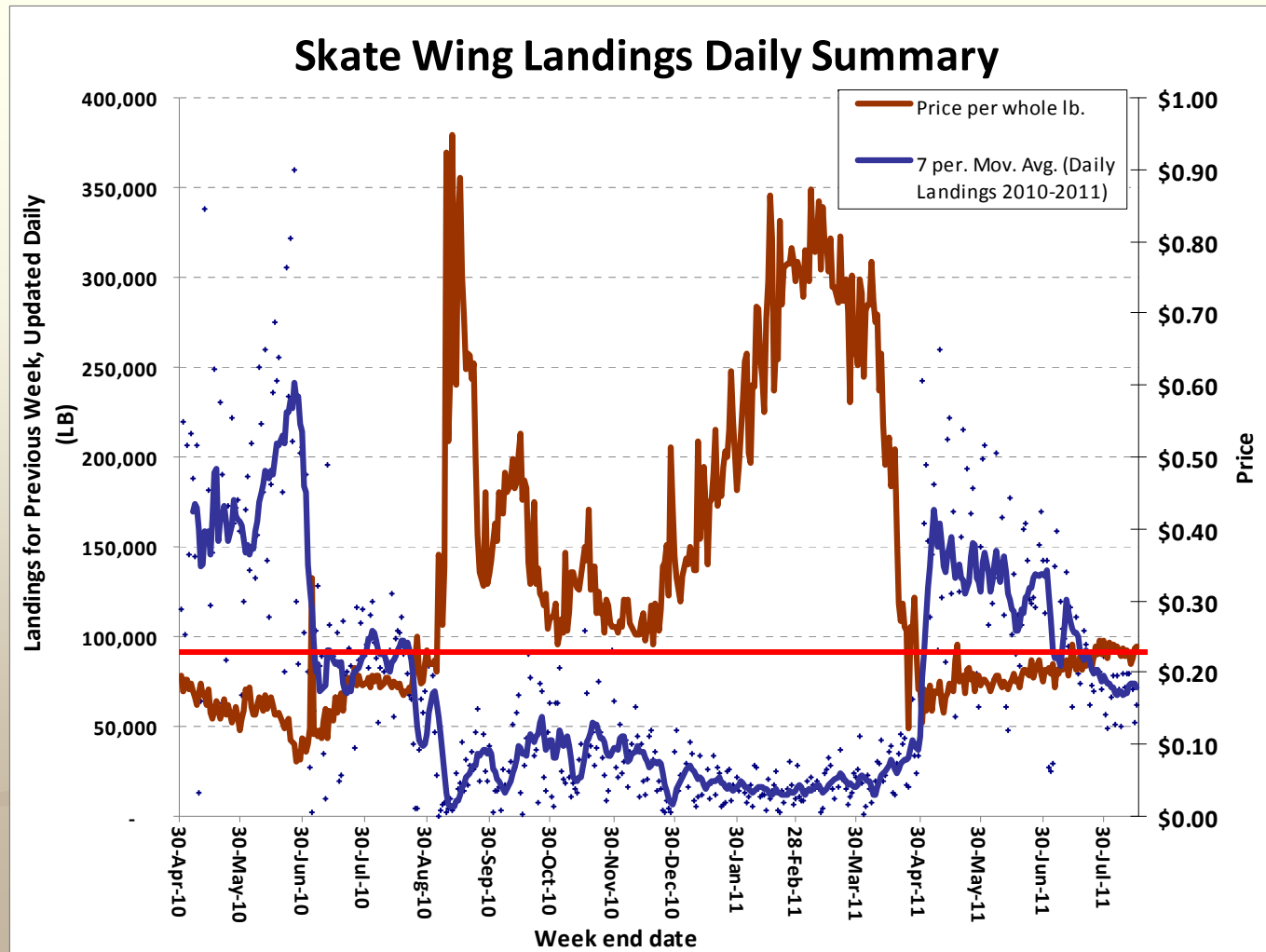
Map 33, page 6-160



Skate wing possession limit analysis

Sec 6.1.3, pg 6-163, Fig 15

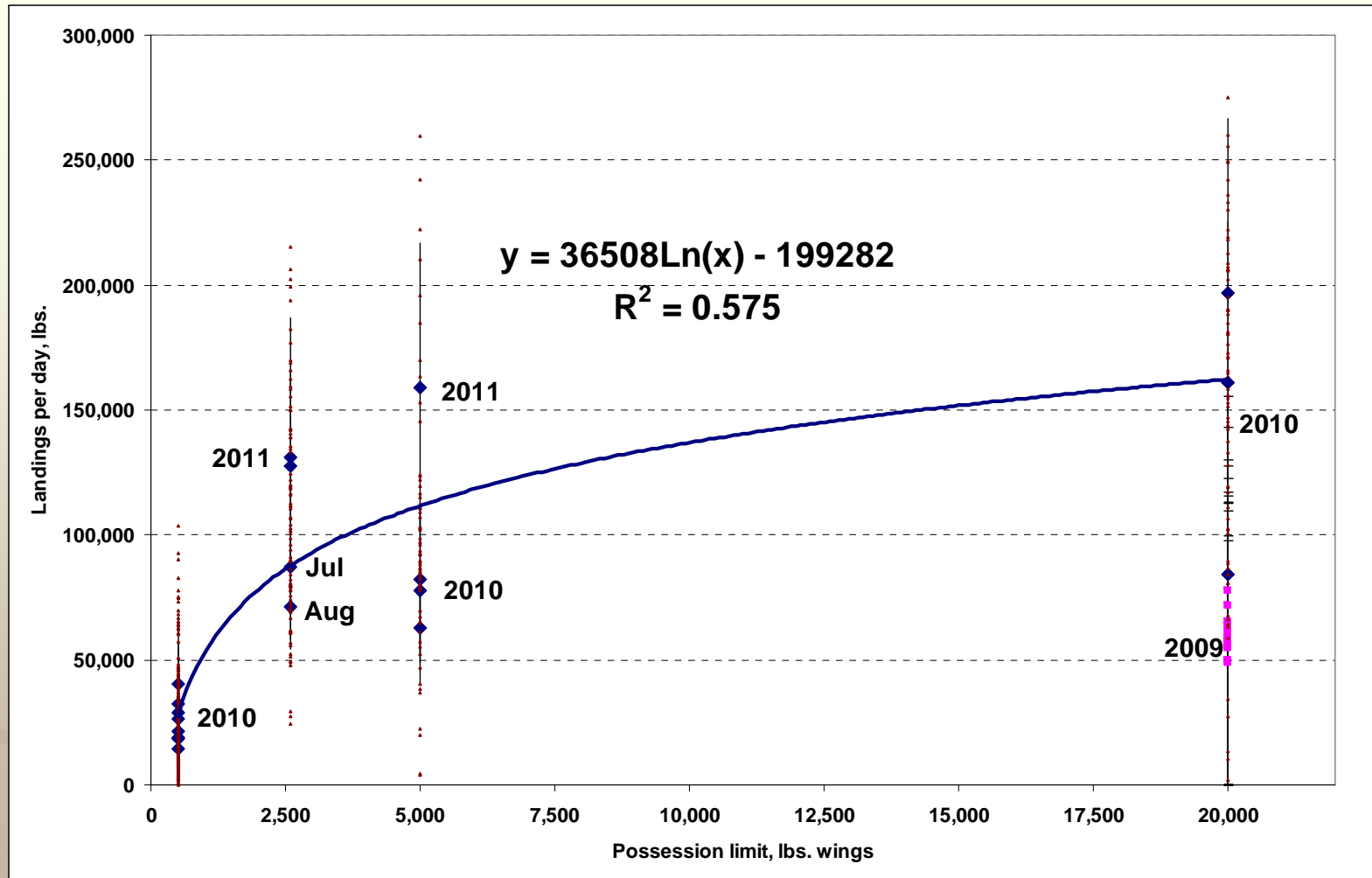
0011



Skate wing possession limit analysis

Sec 6.1.3, pg 6-165, Fig 17

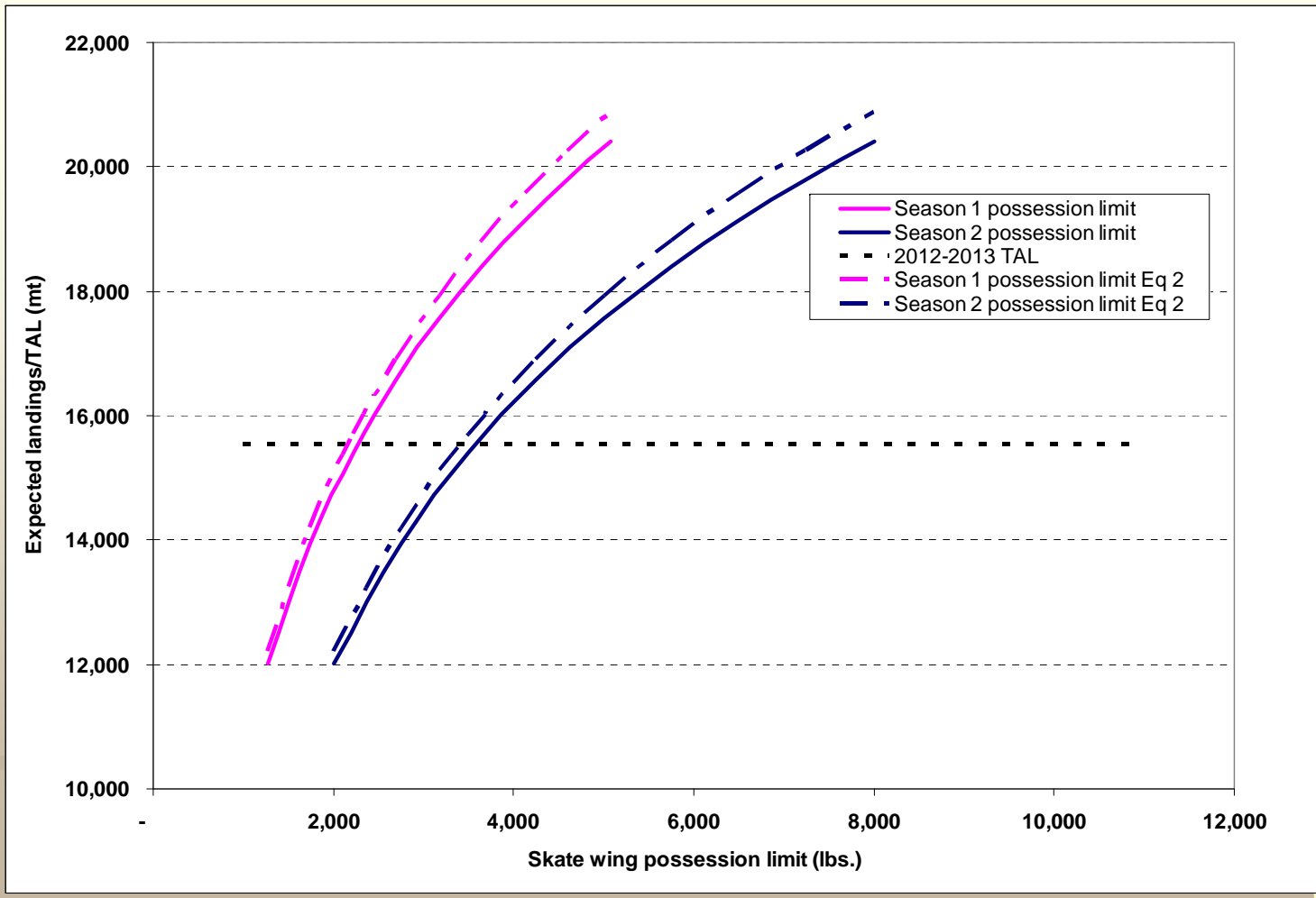
0011



Skate wing possession limit analysis

Sec 6.1.3, pg 6-167, Fig 19

0011



Wing possession limit alternative estimates

15,538 mt TAL; 85% TAL trigger

0011

Specifications	Season 1 possession limit	Season 2 possession limit	Wing TAL trigger	Incidental wing limit	Projected TAL trigger date	Projected percent TAL landed	Parameters Alpha Beta	
100%TAL all data	2,300	3,600	85%	500	3/8/2013	100%	-199282	36508
85% TAL all data	1,500	2,400	85%	500	NA	84%	-199282	36508
100% TAL A3 data	2,100	3,400	85%	500	3/11/2013	100%	-208152	37841
85% TAL A3 data	1,500	2,400	85%	500	4/27/2013	86%	-208152	37841
Status quo, all data	2,600	4,100	85%	500	2/22/2013	90%	-199282	36508
Status quo, A3 data	2,600	4,100	85%	500	2/16/2013	91%	-208152	37841

45